

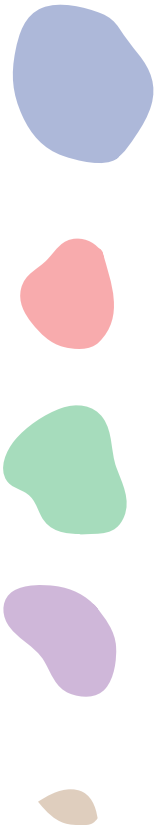
Items only appear once, and are circled by a grouping mark. Marks are transparent so that overlaps can be seen.

Encoding (retinal varb + what it encodes)

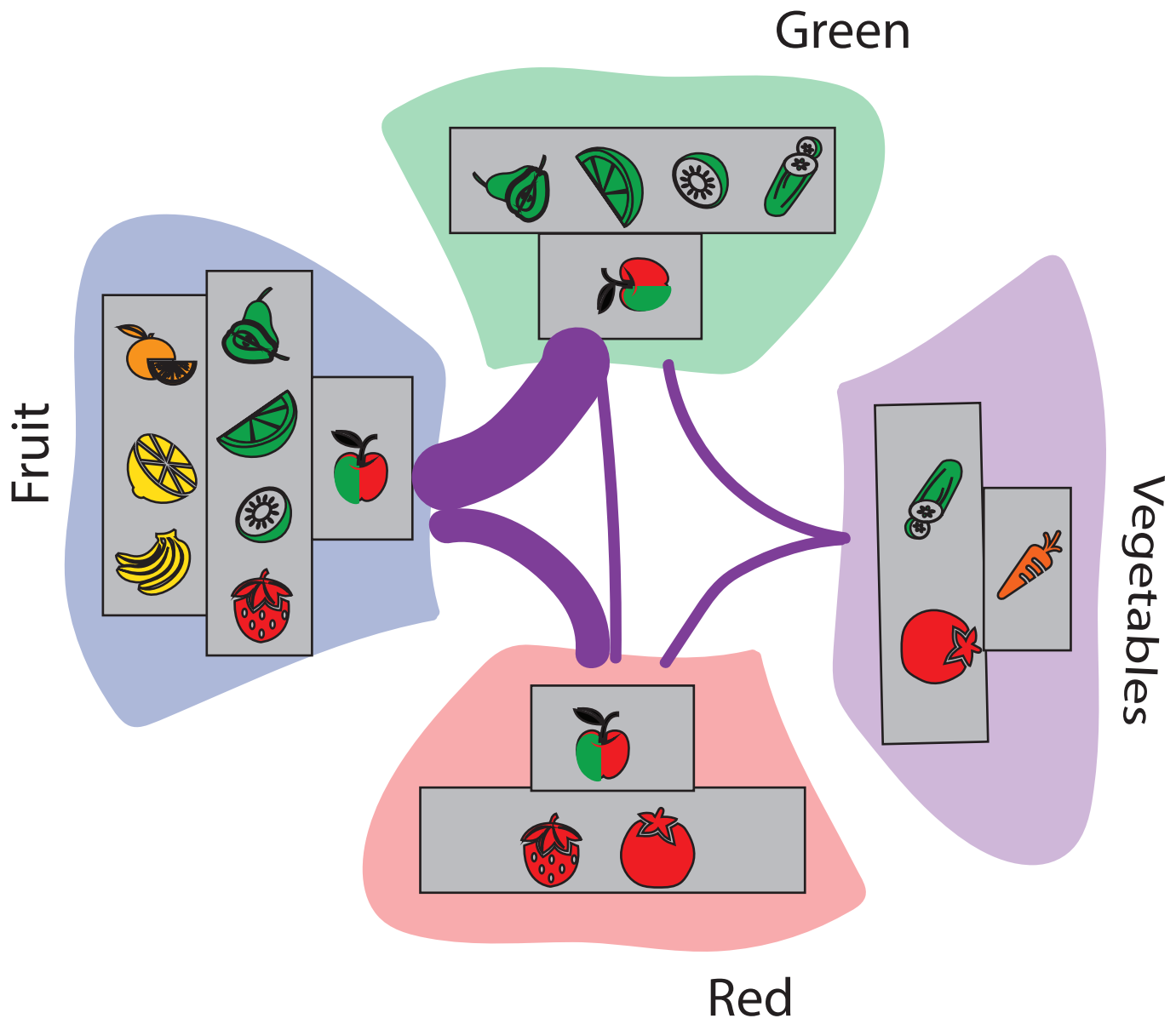
Marks for items



Marks for sets



intersection (red+green)

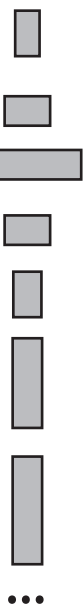


layers (gray boxes) indicate how many sets share the item (example, in fruit: [apple] shared by 3 groups [pear, kiwi, lime, strawberry] shared by 2 groups, [banana, lemon, orange] shared by 1 group)

Line thickness indicates how many shared items

Encoding (retinal varb + what it encodes)

Marks for layers



Marks for connections



Marks for sets



Marks for items

